



Vischer & Bolli
OSG GROUP COMPANY



The new reCool® Hi-Speed: Upgrade your spindle to coolant through for high speed

EASY

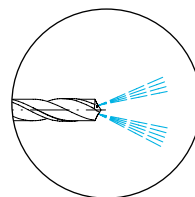
Existing high RPM spindles can now easily be converted to through coolant

FAST

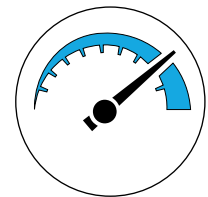
Improved design providing higher speeds for high-speed and high-frequency spindles

reCool® Hi-Speed

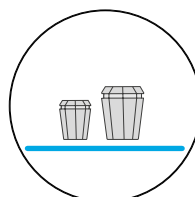
The patented solution to upgrade spindles to internal coolant tools – Smart retrofit!



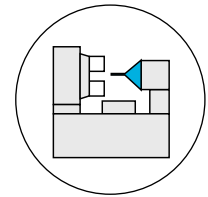
Upgrade to internal coolant easily



Designed for high speed tools up to 40'000 rpm



Available in sizes ER(M) 11 & 16 shank 3-10mm

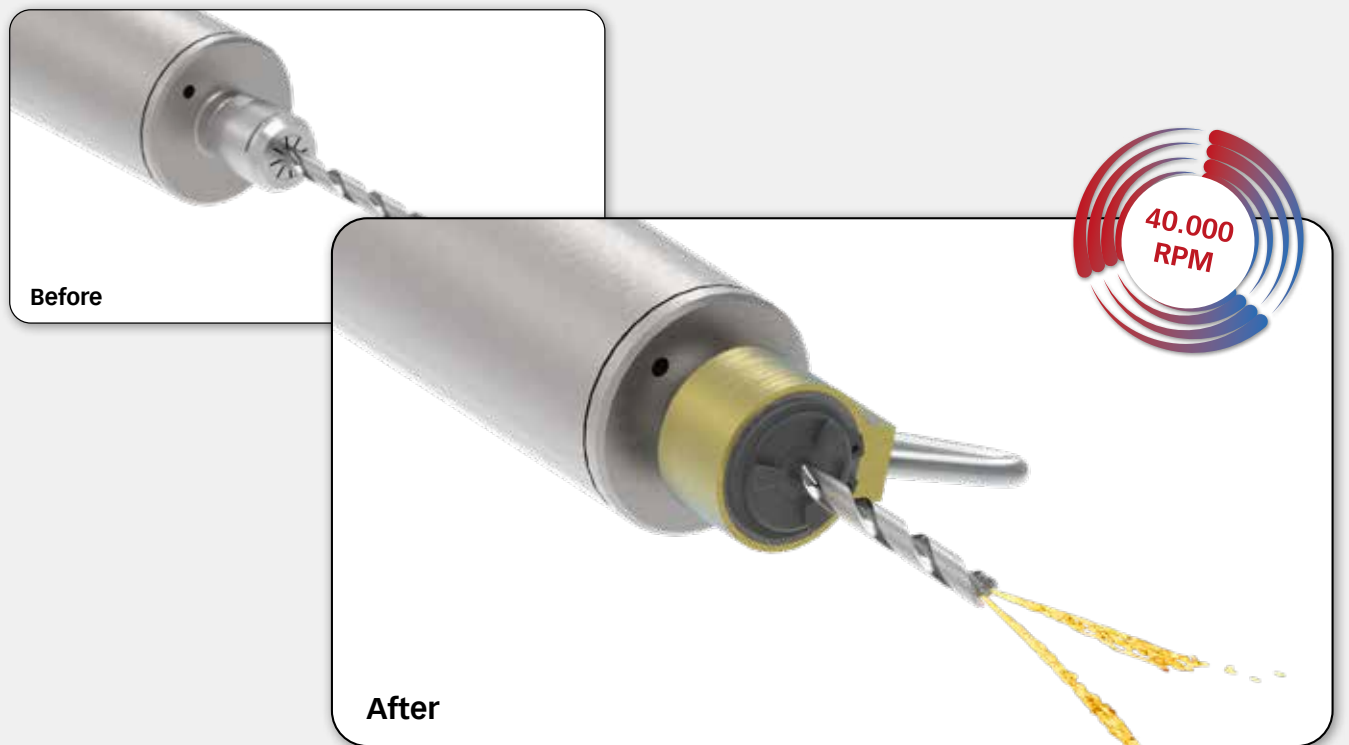


Optimized for high-speed & high-frequency spindles

Get your free reCool® test now!
Learn more at try.rego-fix.ch/recool/retrofit

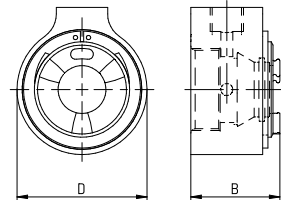
REGO FIX

Upgrade high-speed spindles to internal cooling with reCool®



- // For high speed spindles
- // Tools shank diameter 3 – 10 mm
- // Maximum pressure 100 bar
- // Suited for emulsion and oil
- // Maximum RPM 40000 min⁻¹
- // For ER 11 and ER 16 including ERM (Mini)
- // Ceramic coating for reduced friction
- // To be used with KS/DS coolant disks

| Type | Part no. | Dimensions [mm] | | Thread | Accessory |
|---------------------------------------------------------------|------------|-----------------|-------|-------------|-----------|
| | | B | D | | Wrench |
| Set RCR Hi-S/ER (for emulsion- and oil-based coolants) | | | | | |
| SET RCR Hi-S/ER 11 | 3711.60000 | 16.5 | 21.75 | M 14 x 0.75 | E 11 AX |
| SET RCR Hi-S/ER 16 | 3716.60000 | 24.5 | 34 | M 22 x 1.5 | E 16 AX |



| | | | | | |
|---------------------------------------------------------------|------------|------|-------|-------------|---------|
| RCR Hi-S/ER nut (for emulsion- and oil-based coolants) | | | | | |
| RCR Hi-S/ER 11 | 3711.69000 | 16.5 | 21.75 | M 14 x 0.75 | E 11 AX |
| RCR Hi-S/ER 16 | 3716.69000 | 24.5 | 34 | M 22 x 1.5 | E 16 AX |



RCR Hi-S/ER

| | | | | | |
|----------------------------------------------------------------|------------|------|-------|-------------|---------|
| Set RCR Hi-S/ERM (for emulsion- and oil-based coolants) | | | | | |
| SET RCR Hi-S/ERM 11 | 3711.70000 | 16.5 | 21.75 | M 13 x 0.75 | E 11 AX |
| SET RCR Hi-S/ERM 16 | 3716.70000 | 24.5 | 31 | M 19 x 1 | E 16 AX |

| | | | | | |
|----------------------------------------------------------------|------------|------|-------|-------------|---------|
| RCR Hi-S/ERM nut (for emulsion- and oil-based coolants) | | | | | |
| RCR Hi-S/ERM 11 | 3711.79000 | 16.5 | 21.75 | M 13 x 0.75 | E 11 AX |
| RCR Hi-S/ERM 16 | 3716.79000 | 24.5 | 31 | M 19 x 1 | E 16 AX |

Included in set RCR Hi-S/ER & ERM

| Type | Qty. |
|------------------------|------|
| RCR Hi-S 11 – 16 | 1 |
| SET RHS-100 | 1 |
| SET RVG-100 1/8" – 0° | 2 |
| SET RVA-100 1/8" – 90° | 2 |